



CAREER & TECHNICAL EDUCATION

THE TEXAS JOB MARKET HAS ABUNDANT HIGH-WAGE OPPORTUNITIES CAN BE FILLED BY NEW HIGH SCHOOL GRADUATES AFTER COMPLETING A CTE PROGRAM USING AN ESA:

ANNUAL JOB OPENINGS:
219,000

AVERAGE WAGE:
\$ 60,000

AVERAGE TRAINING TIME:
< 2 YEARS

BUT INSTEAD, 87% OF TEXAS SCHOOL DISTRICTS DO NOT OFFER A CTE PROGRAM IN HIGH-WAGE, HIGH-DEMAND FIELDS.

Most school districts offer programs that are either low-wage or low-demand:

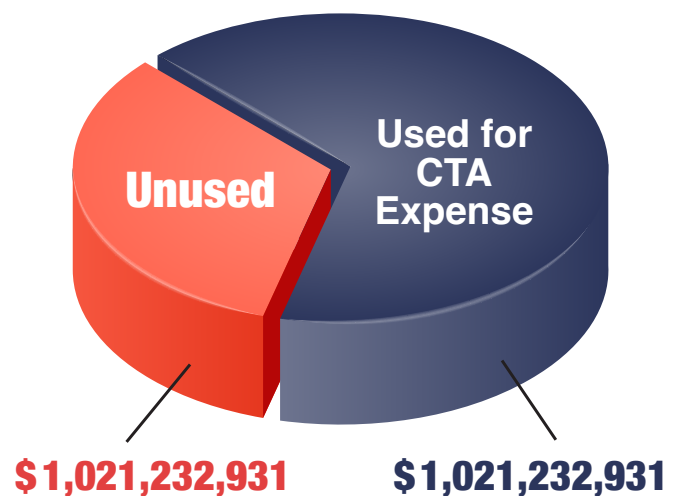
- Floral Design (Median Wage: \$29,076)
- Business Management (Median Wage: \$43,205)
- Digital Communications (Median Wage: \$42,837)
- Culinary Arts (Median Wage: \$30,911)

CAREER AND TECHNICAL EDUCATION ALLOTMENT

Texas is unique because of its unparalleled dedication to CTE training. Our state, alone, gives schools \$3.2 billion as a CTE allotment (three times more than the Federal Government gives to all 50 states), but schools are only required to spend 55% or \$1.76 billion of the allotment on CTE, incentivizing schools to offer cheap CTE programs that offer little to students and pocket the rest of the taxpayer dollars. This creates a perverse incentive to offer poor programs with low ROI to students.

Students do not have a choice in the CTE programs they are allowed to take, but rather, students only have access to programs of study chosen by school administrators.

TEXAS STATEWIDE: CTE ALLOTMENT 2023



UNTAPPED POTENTIAL

92% of Texas students live within a 30-minute drive of one of our 97 community or technical college campuses. By leveraging an ESA, Texas high school students can join a career pathway, as early as 16 in many fields, that leads to a high-wage, high-demand job.

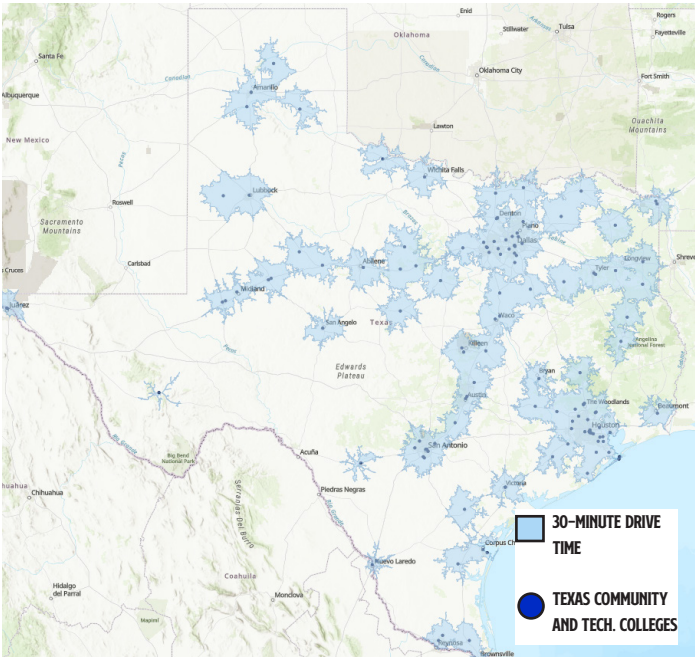


STUDENTS DESERVE ACCESS TO HIGH-QUALITY PROGRAMS & TEXANS DESERVE FISCAL RESPONSIBILITY

With an Educational Savings Account, students can enroll in existing career programs in high-wage, high-demand fields such as electrical, oil & gas, and plumbing programs. Allowing students to earn a family sustaining wage without incurring debt. And by using our state’s existing workforce pipeline, Texans can be confident that taxpayer funds are not being wasted on duplicating expensive facilities.

- Electrical Studies (Median Wage: \$54,407)
- Oil & Gas (Median Wage: \$56,481)
- Plumbing (Median Wage: \$55,804)

Areas of Texas Within a 30-Minute Drive of a Community College or Technical College



TEXAS WORKFORCE SHORTAGE

	Electricians	17,309	9,211
	HVAC Mechanics & Installers	6,335	3,719
	Plumbers	9,533	5,751
	Diesel Mechanics	13,254	8,115
	Oil & Gas Exploration	12,881	6,018
	Refining & Chemical Process	11,010	8,595
	Welders	11,197	6,792

Data from Texas Education Agency, 2024 and Labor Market Information and Resource, 2024

Scan the QR Code to learn more

